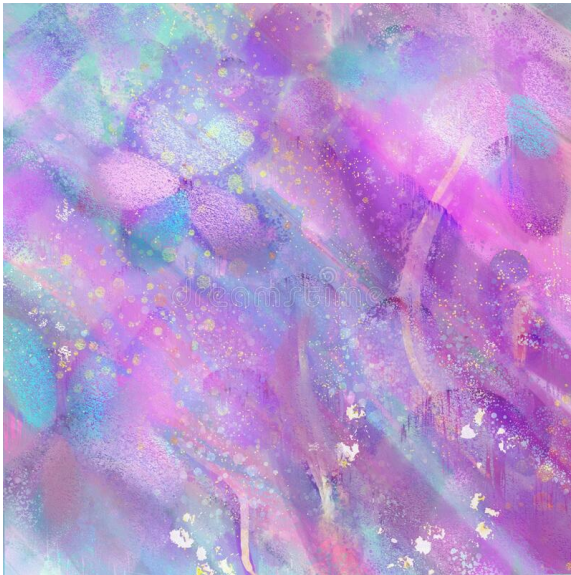




"The first blooms of spring always make my heart sing."
--S. Brown



Charitable Corporation Connections Mid-April 2021

**CPCC annual meeting
June 5, 2021 at 1:00 p.m.**

Happy April!

The board is working on exciting presentations for our first-ever *virtual* CPCC annual meeting. Registration is open now! Go to www.coloradopeo.org and log in as a member. It's on the main page. You'll see it! Select both meetings offered.

There are different rules for virtual meetings. Access them [here](#). Print them. Read them. Proposed amendments to the CPCC bylaws and proposed CPCC resolutions will be sent out by Shari Fox, CO State President, on May 1, 2021, along with proposed amendments to CO state bylaws. **If you are a voting member of convention, you need to study these documents.** Please call any board member if you need help finding any additional published information!

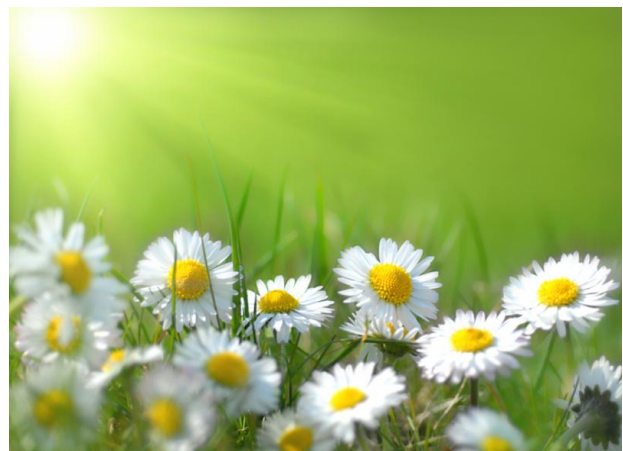
Watch your email for the amendments to be voted on at the annual meeting.

P.E.O. love from the CPCC Board
Cheryl, Susan, L J, Jill, Liz, Janet, and Shari

Marguerite Fund

The Marguerite Fund is currently sponsoring 10 women with \$500 monthly gifts, and each received an additional spring gift of \$500. During the past fiscal year, the Marguerite Fund served a total of 19 individuals. Your generous donations totaling over \$71,000 during the past fiscal year made all of this possible. Thank you!

Have questions? [Click here](#)





Chapter House:

The Chapter House is serving 4 residents and has 3 apartments ready for immediate occupancy. Donations to Chapter House operations were over \$55,000 this past fiscal year. Donations to Share the Care were \$1170. Thank you!

El Paso County has moved to fewer COVID-19 restrictions for events and

businesses. We are reviewing and making recommendations for opening the chapter house. Right now we have prioritized getting ready for the annual meeting. Watch for more news.

Please contact [Barb Nordhausen](#) if you can help with the Chapter House gardens.

The Cottage? One last task to be completed and demolition will begin. Just waiting on Colorado Springs Utilities...stay tuned.

MONEY MONEY MONEY



Lickable Wallpaper: [UNAUDITED](#) CPCC FINANCIAL STATEMENTS for April 1, 2020 through March 31, 2021 are yours for clicking [balance sheet](#), or [p/I March](#), or [p/I FYE](#).

Blueberry Pie Gum: It has been an eventful year financially.

Scrumdiddlyumptious Bar: Donations to Marguerite Fund and Chapter House were more this year than last year. Deepest thanks to all of you for your generosity through all of the curve balls that 2020 held! The gift lists are available by clicking [here for category](#), or [here for chapter](#).

Wonka Razzles: Amazon Smiles brought in \$151.95 in donations to the CPCC.

Wonka Baked Beans: Kroger donations totaled \$4259.23. Thank you for linking your card to our 501(c)(3).

WonkaVision Chocolate Bars: Our bookkeeper Amy revised our chart of accounts and our documentation processes to help our statements to be more transparent and digestible.

Everlasting Gobstopper: The Chapter House operating loss for the fiscal year was approximately \$200,000. In English, we spent \$200,000 over and above what we generated in income. The money was spent for repairs and safety upgrades. We spent investments to cover this loss.

Fun Fact!

Question: Can and should a nonprofit strive to earn a profit from its business?

Answer: The term "nonprofit" is a bit of a misnomer. Nonprofits can make a profit and should try to have some level of positive revenue to build a reserve fund to ensure sustainability. The key difference between nonprofits and for-profits is the **purpose** for which its expenses and profits are used. A nonprofit organization cannot distribute its profits to any private individual (although nonprofits may pay reasonable compensation to those providing services). This prohibition against "private benefit" is because tax-exempt charitable nonprofits are formed to benefit the public, not private interests.



Thanks to all of our sisters and friends who have linked their City Market and King Sooper purchases to the CPCC. When you associate your card with **ES330** in the Kroger Community Rewards program, the company donates directly to CPCC.

CPCC Board of Directors

Cheryl Burnside, ES, Chair

Susan Miller, W, Vice Chair

L J Van Belkum, JA, Past President CO State Chapter, Treasurer

Jill Hyde, JI, Secretary

Liz Aikin, Y, CH Trustee

Janet Kingsbury, BV, Past President CO State Chapter, MF Trustee

Shari Fox, AT, CO President

Email us with any questions you have! Click [here](#)



Stay safe and remember to wash your hands!